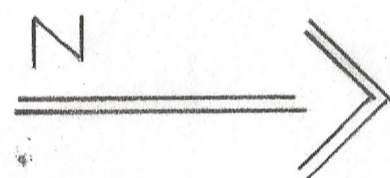


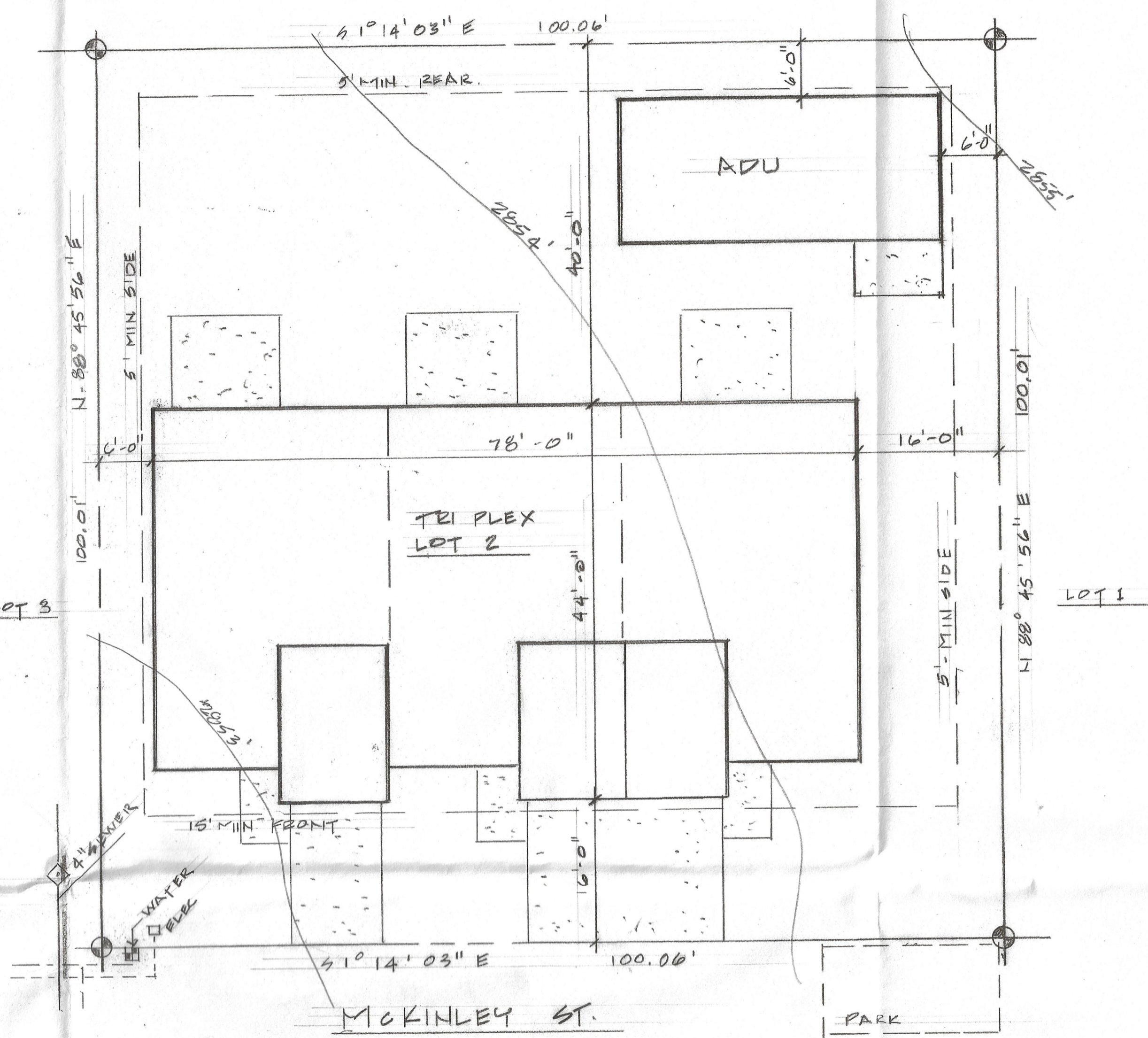
VICINITY MAP NO SCALE



**LOT 2 BALLFIELD SUBDIVISION**  
 A REPLAT OF BLOCK 66 IN LANCASTERS  
 ADDITION TO THE TOWN OF LONDON  
 10,007 SQ. FT

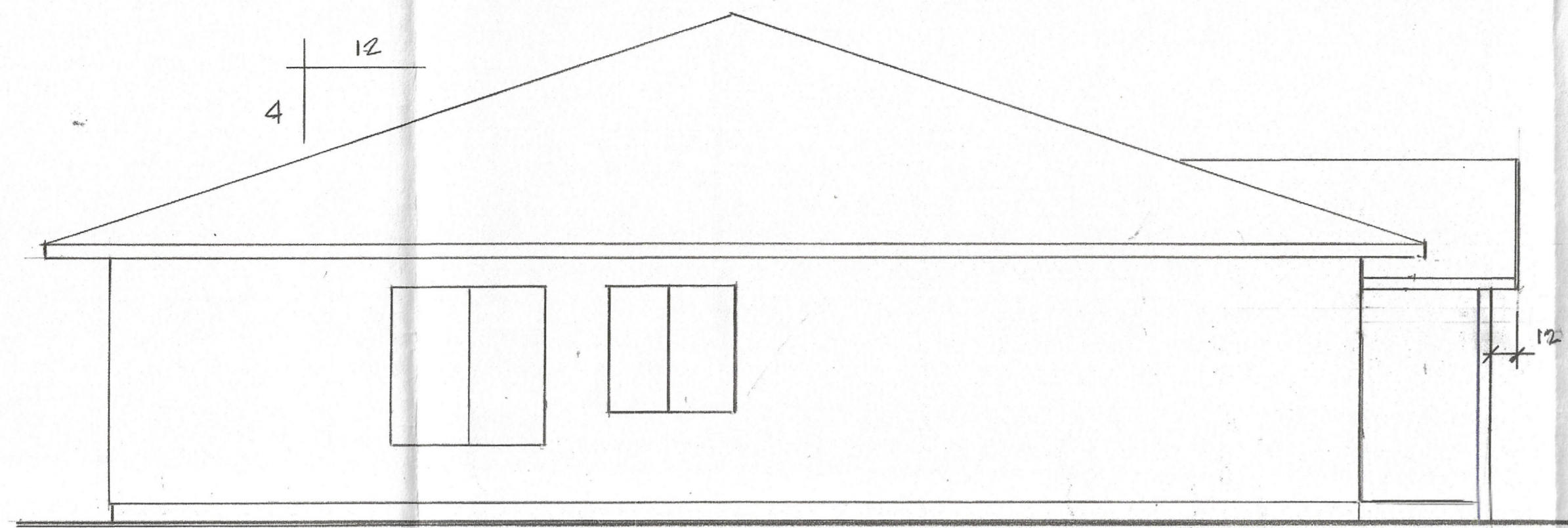
**NOTES:**

- LANDSCAPE - WATER CONSERVING PLANTS & BARKDUST @ STREET SIDE
- LIGHTING - PORCH LIGHT @ ENTRY

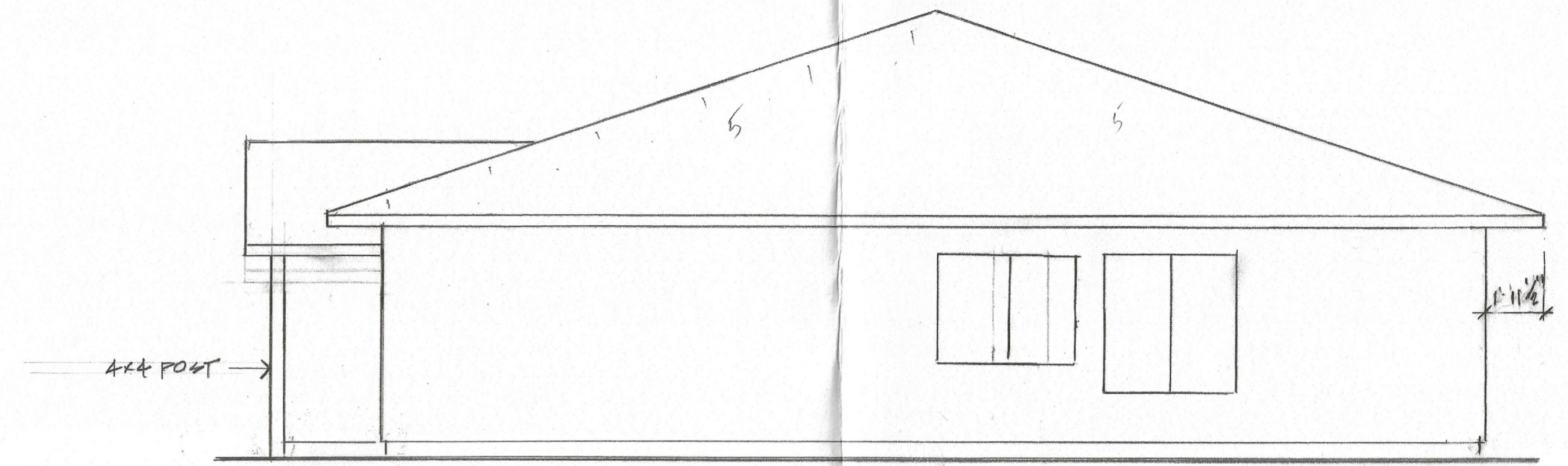


**SITE PLAN 1" = 10'-0"**

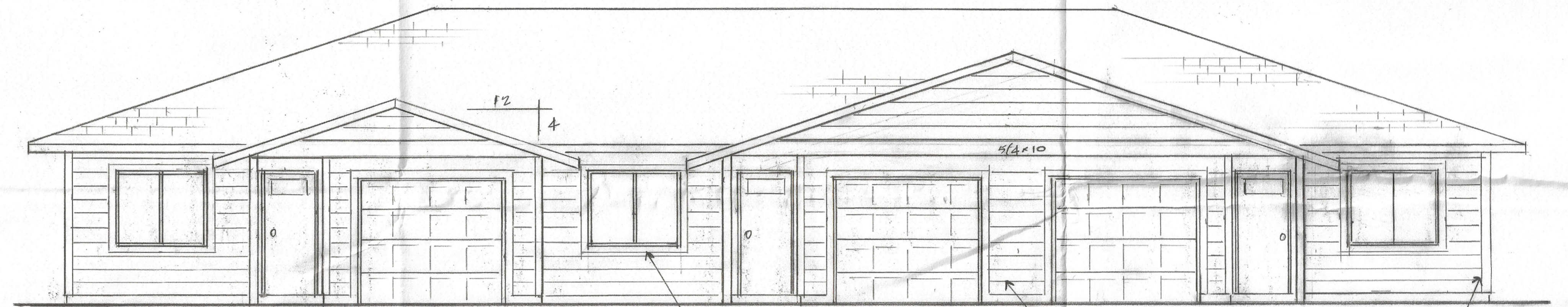
TRI PLEX - ADU LONDON	
GILLIAM CO. OREGON	LOT 2



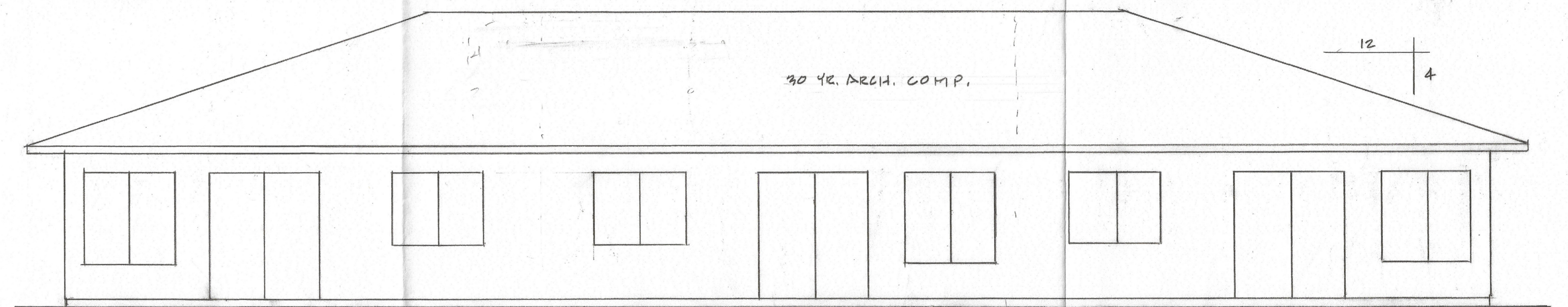
LEFT SIDE ELEV.  $\frac{1}{4}'' = 1'-0''$



RIGHT SIDE ELEV.  $\frac{1}{4}'' = 1'-0''$



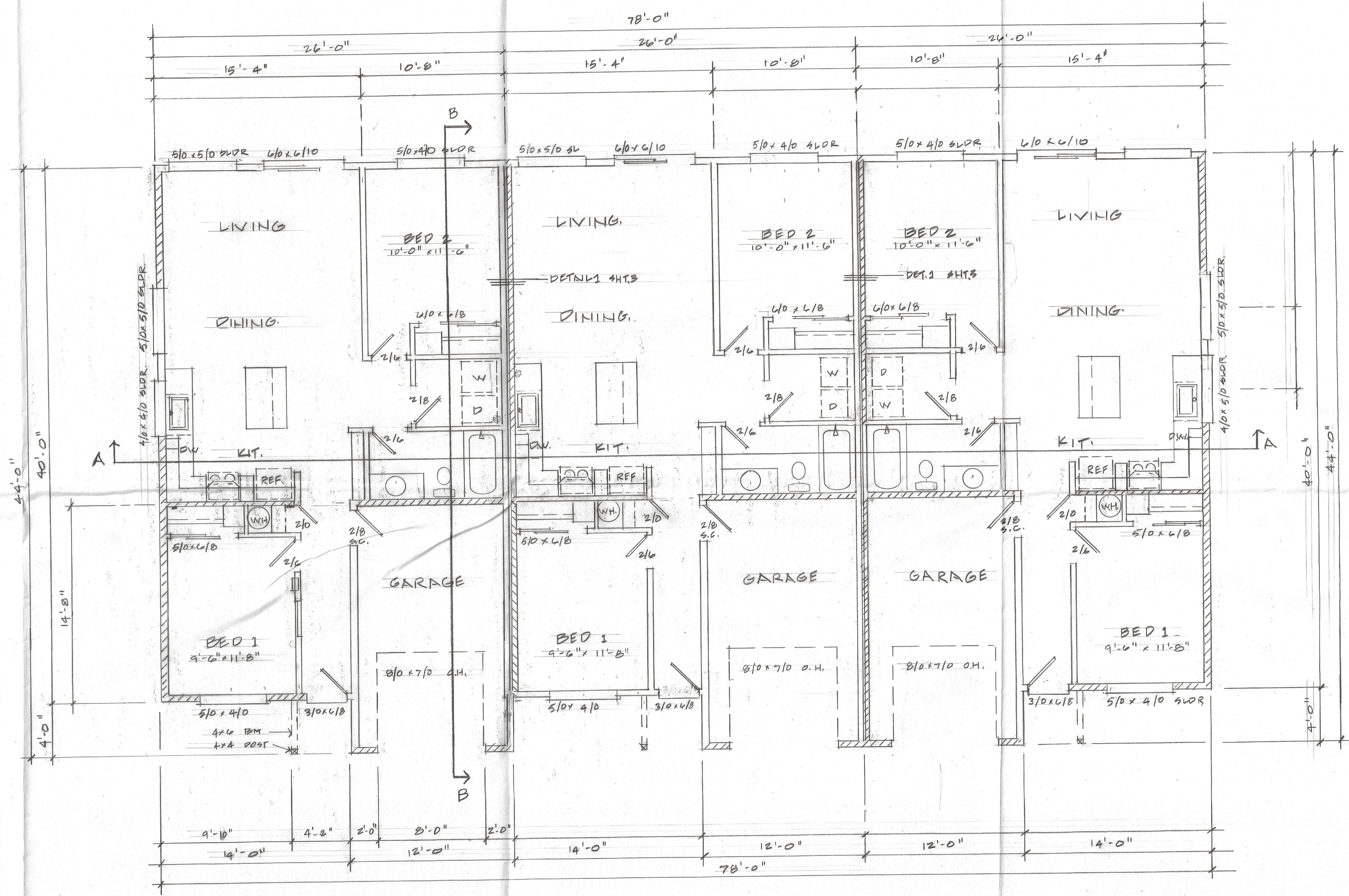
FRONT ELEV.  $\frac{1}{4}'' = 1'-0''$



REAR ELEV.  $\frac{1}{4}'' = 1'-0''$

NOTES:

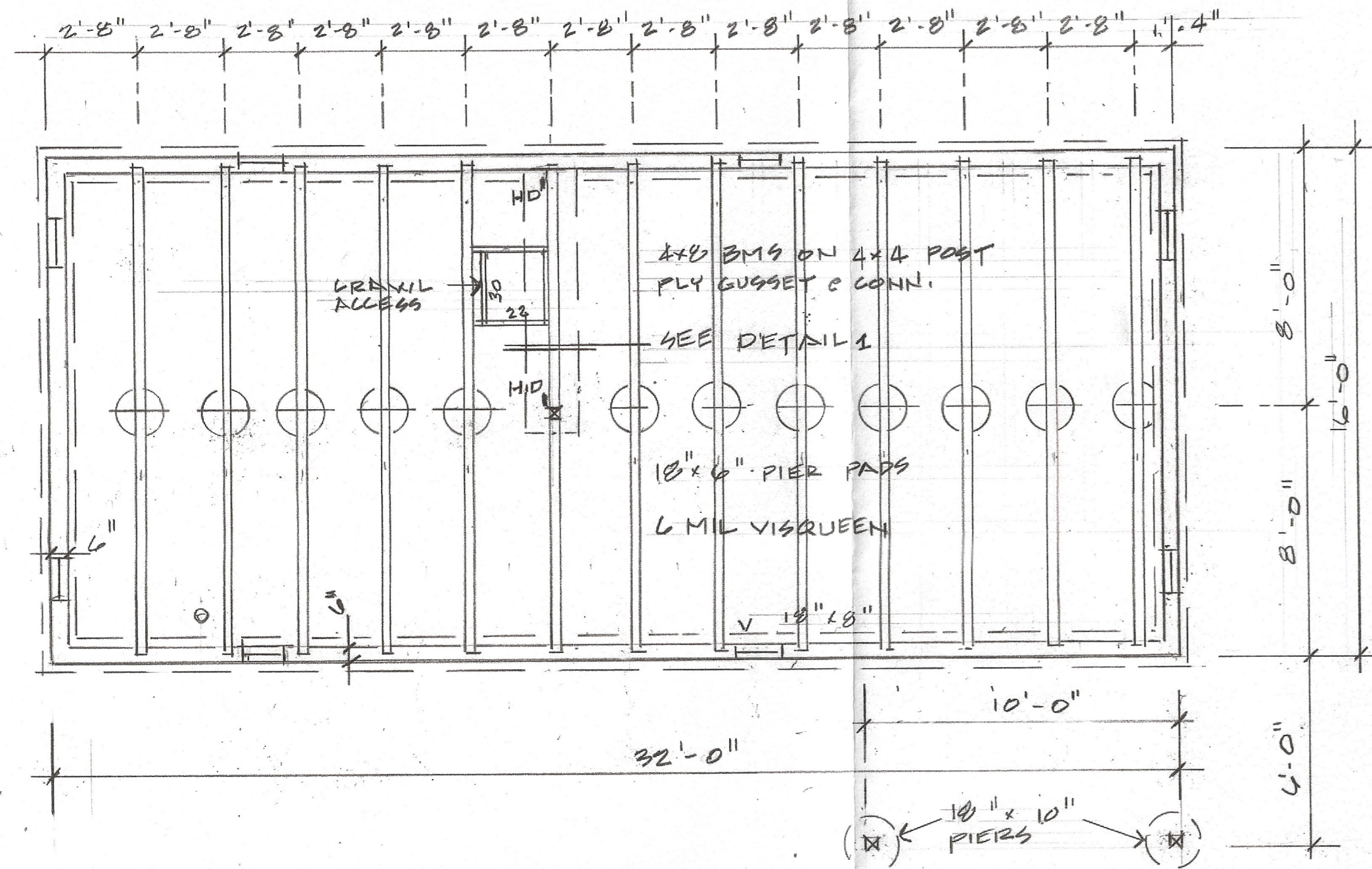
- SEISMIC ZONE C
- WIND - 101 MPH
- FROST - 24"
- % WINDOW & DOOR COVERAGE:
  - FRONT ONLY - 14.09% [LOT2]
  - FRONT & RT. SIDE - 15.03% [LOT1]



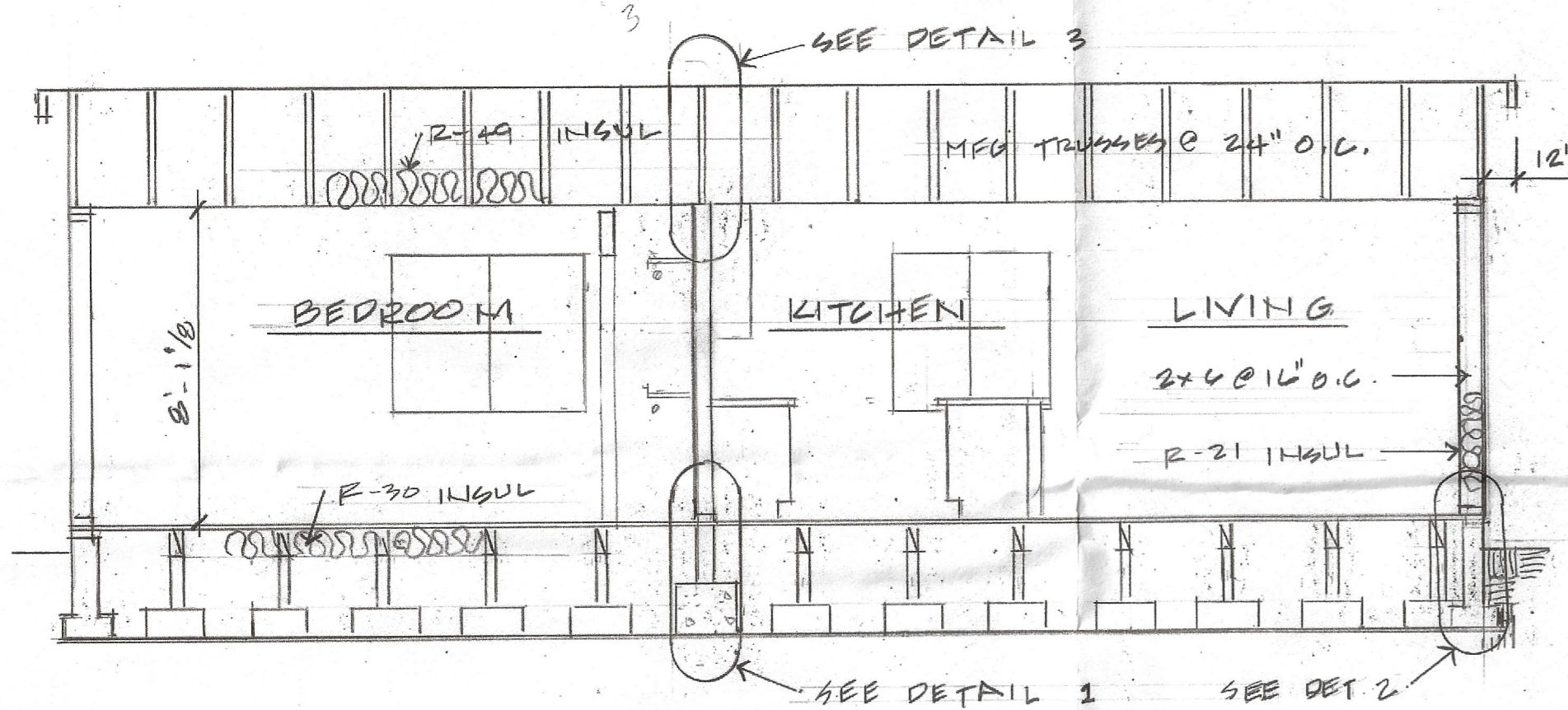
FLOOR PLAN

SCALE 1/4" = 1'-0"

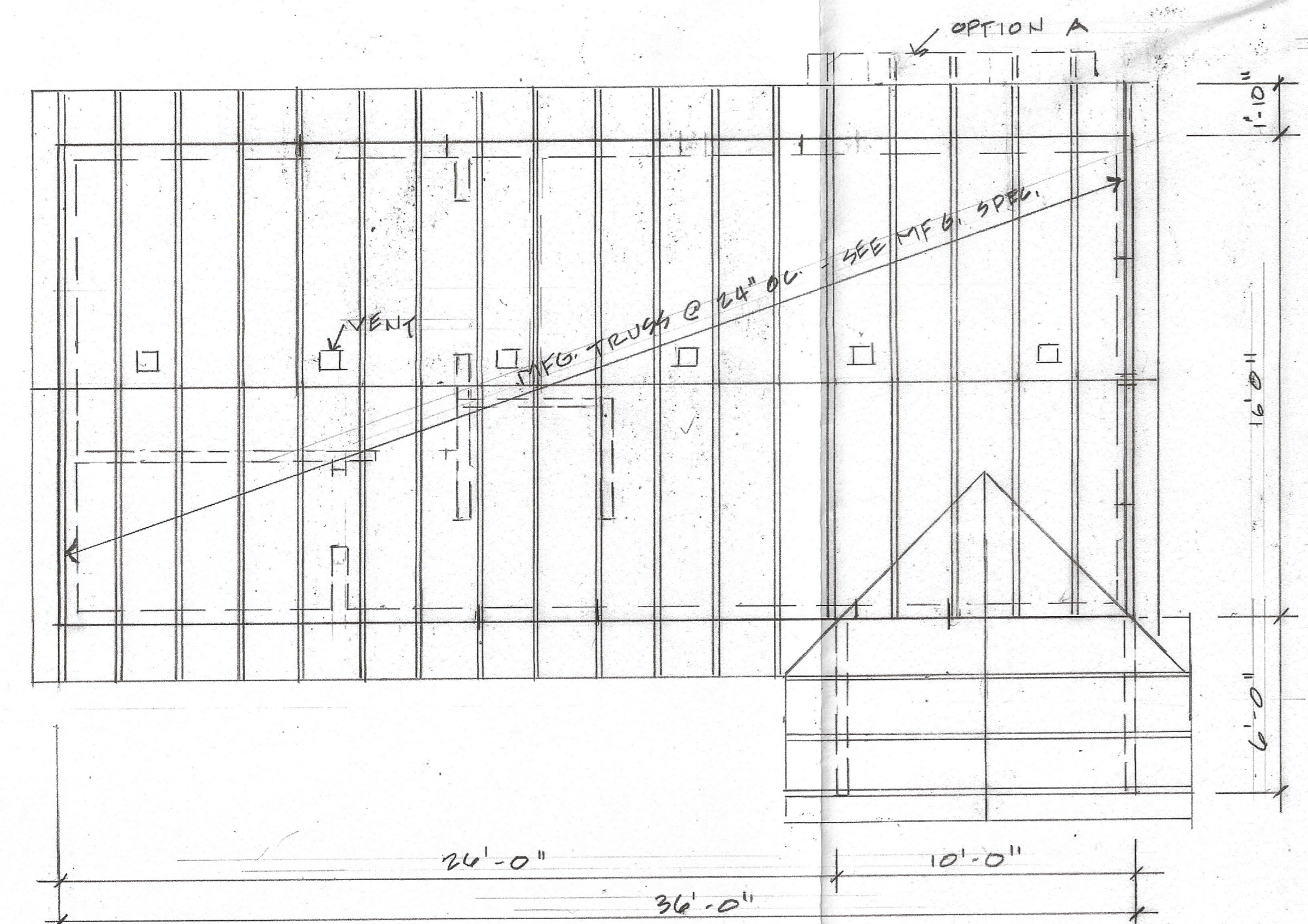
2,620 SQ. FT.



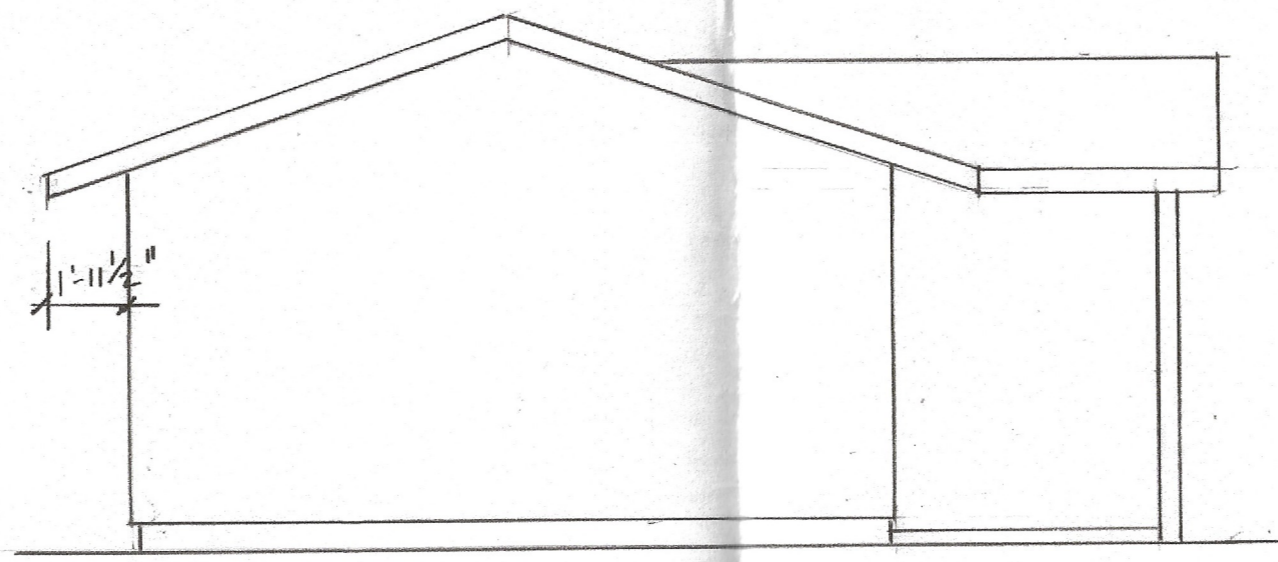
FOUNDATION PLAN 1/4" = 1'-0"



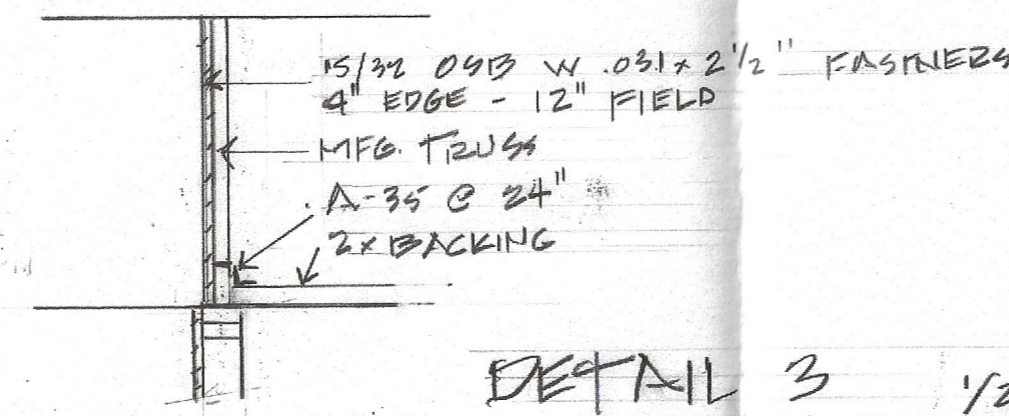
SECTION A-A 1/4" = 1'-0"



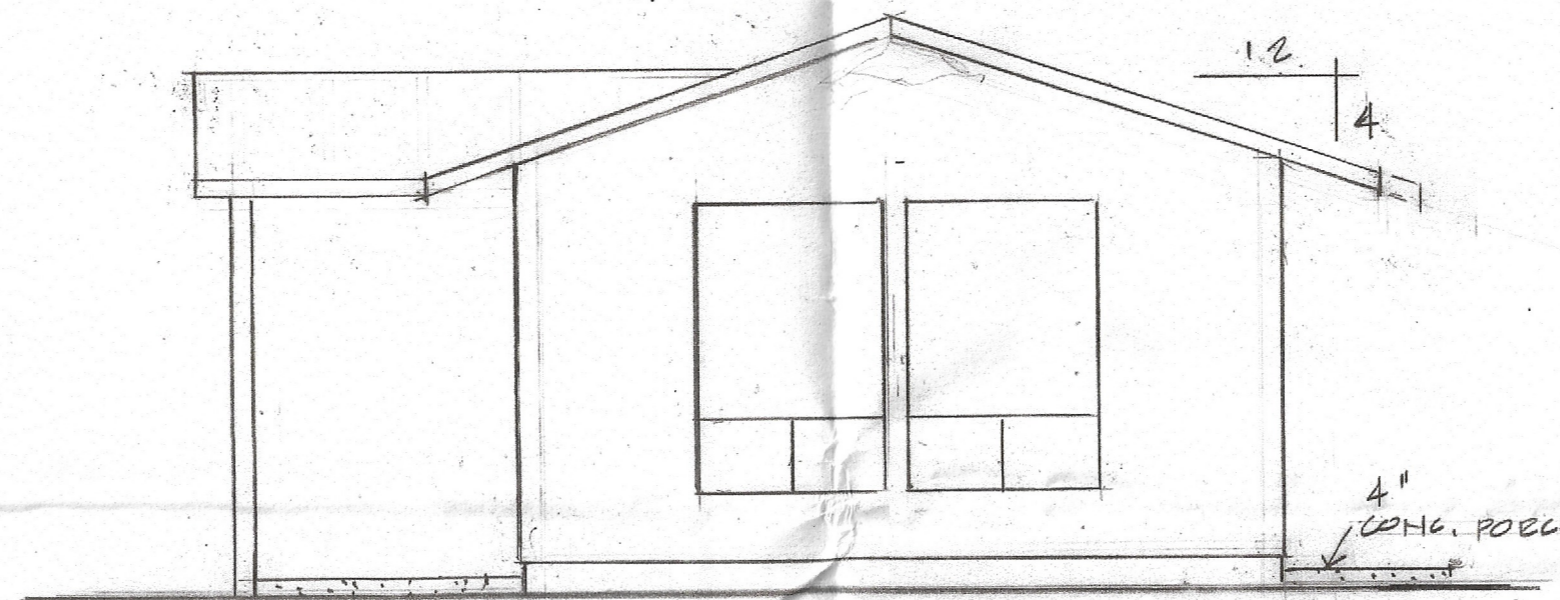
ROOF PLAN 1/4" = 1'-0"



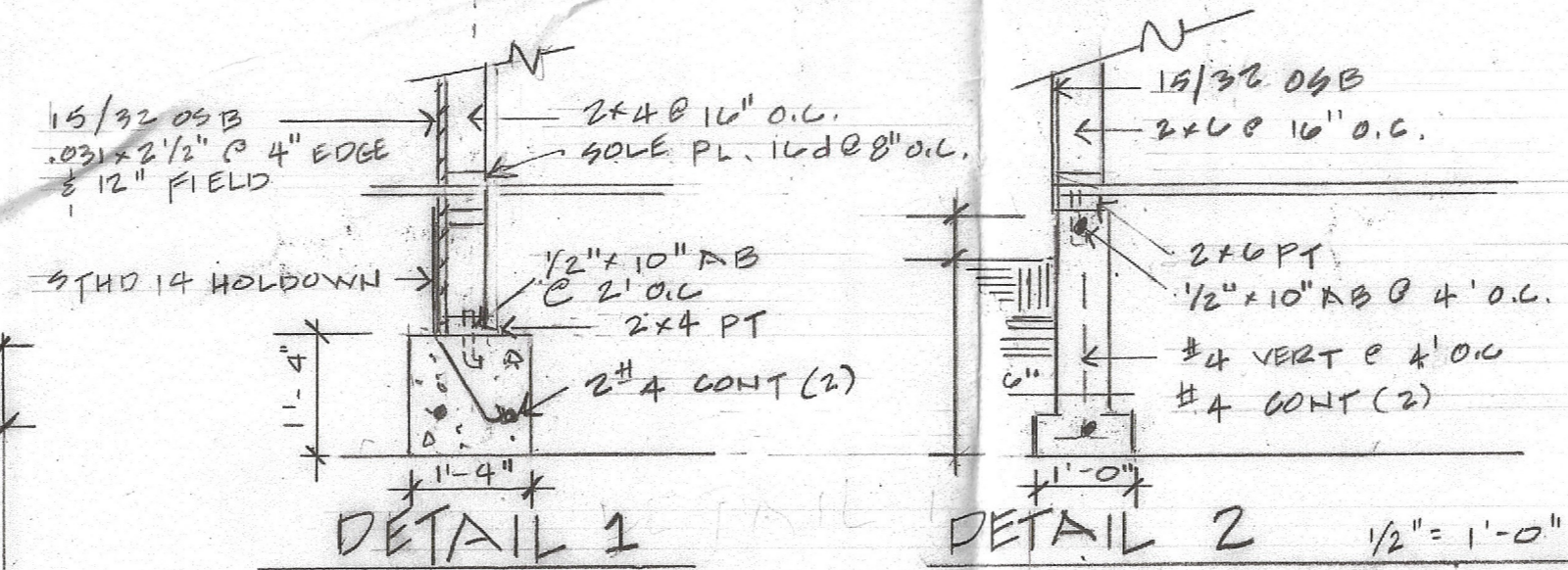
LEFT SIDE ELEVATION 1/4" = 1'-0"



DETAIL 3 1/2" = 1'-0"

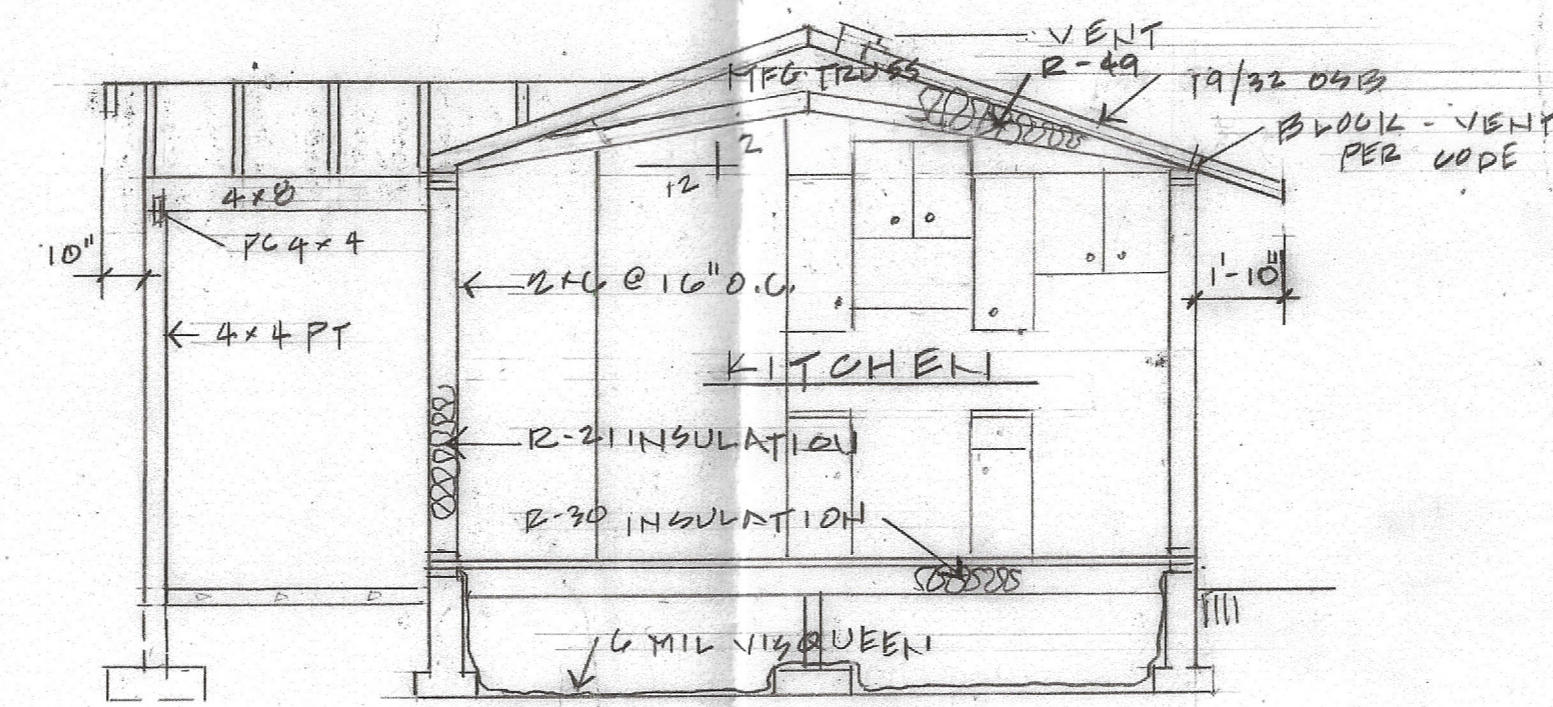


RIGHT SIDE ELEVATION 1/4" = 1'-0"



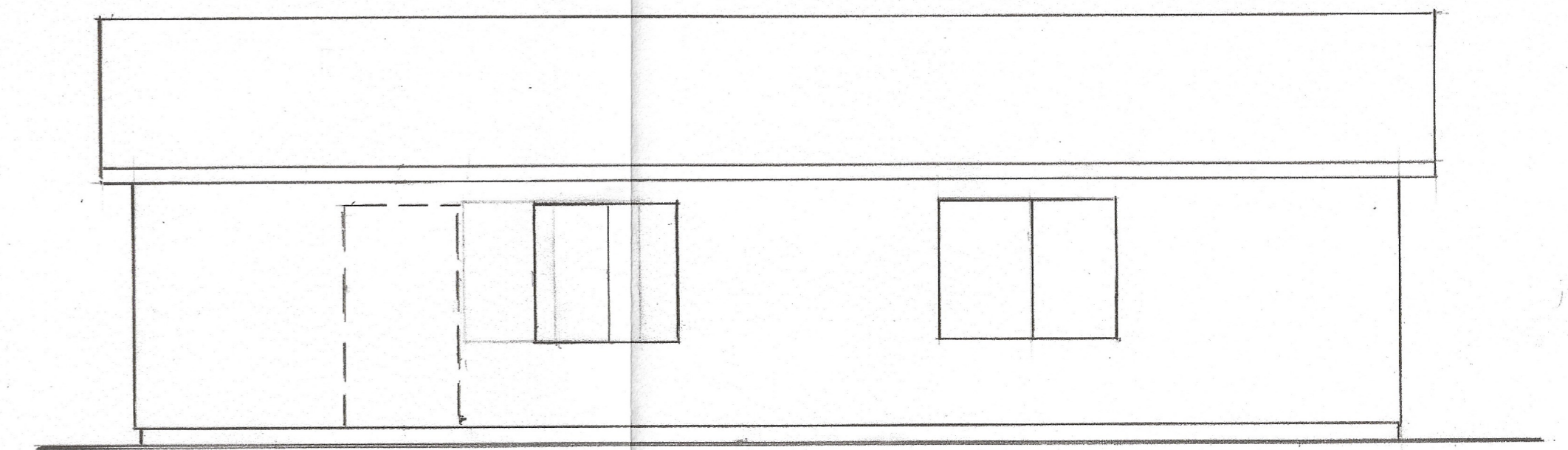
DETAIL 1

DETAIL 2 1/2" = 1'-0"



SECTION B-B 1/4" = 1'-0"

1 5/8" OSB .031 x 2 1/2" 6" O.C. @ EDGE  
12" O.C. @ FIELD  
BOTTOM PL. TO FLOOR - 16d @ 4" O.C.



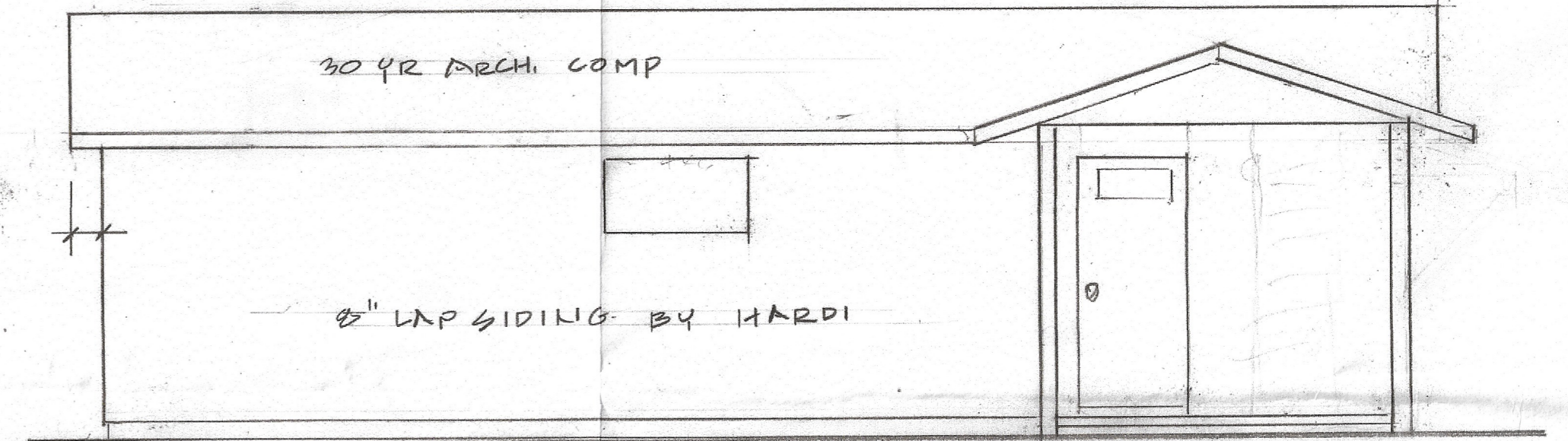
REAR ELEVATION 1/4" = 1'-0"

PLAN OPTION A

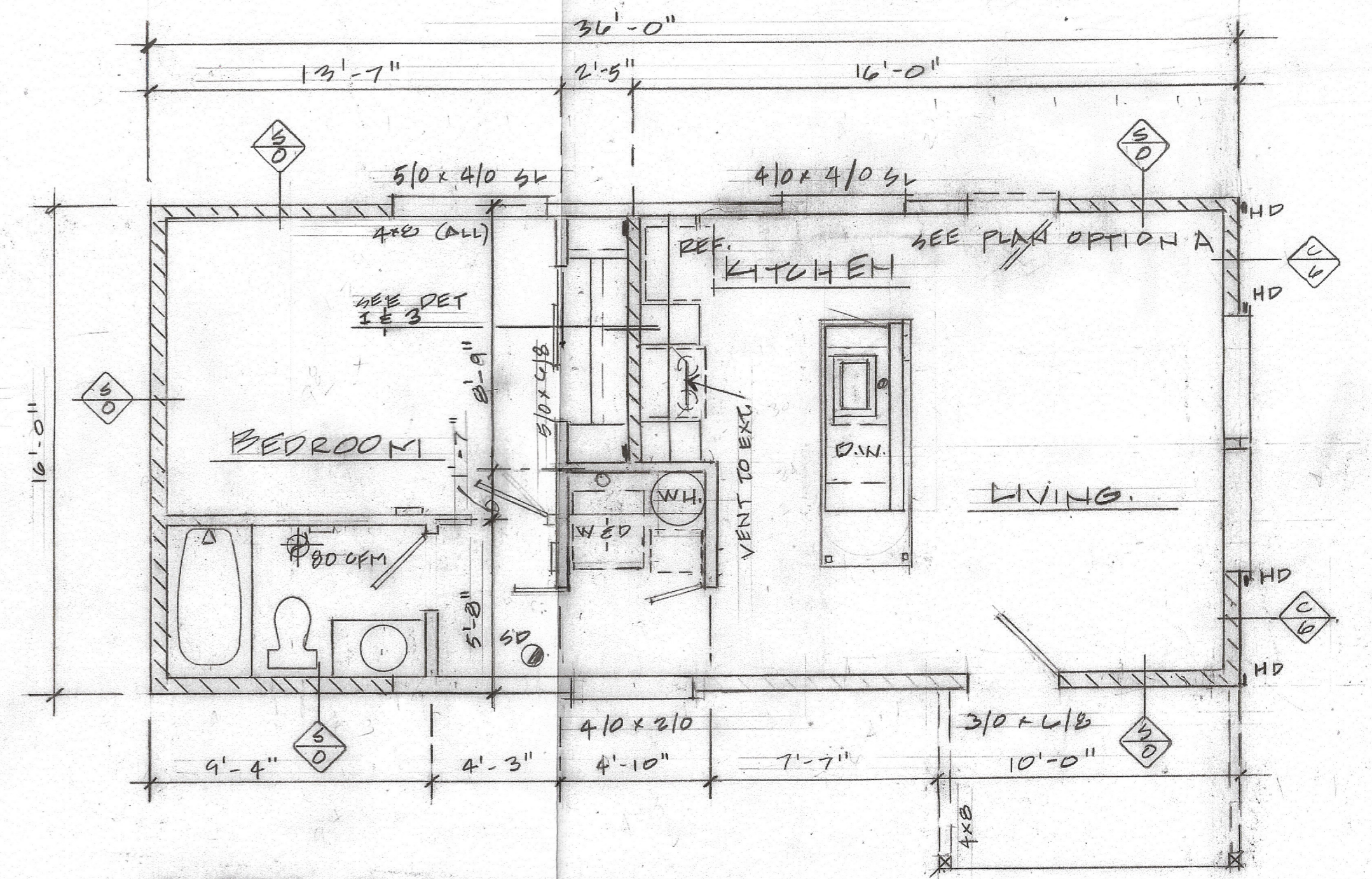
- RELOCATE ENTRY DOOR TO OPPOSITE WALL
- EXTEND ROOF TRUSSES OVERHANGING TO 3' (4)
- OMIT 10' x 6' COVERED ENTRY / PATIO

NOTES:

- SEISMIC ZONE C
- WIND 101 MPH
- FROST - 24"



FRONT ELEVATION 1/4" = 1'-0"



FLOOR PLAN 1/4" = 1'-0"

1 5/8" OSB .031 x 2 1/2" 6" O.C. @ EDGE  
12" O.C. @ FIELD  
BOTTOM PL. TO FLOOR - 16d @ 4" O.C.  
STHD 14 HOLD-DOWNS